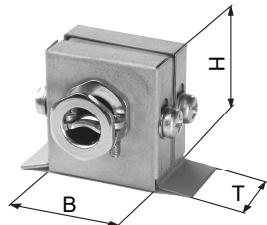


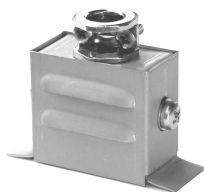


11. Anschlussarmaturen (Breite x Höhe x Tiefe in mm)

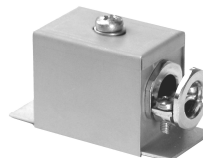
Anschlussarmaturen 11.1.1-11.1.3 sind Festanschlüsse! Bitte um Angabe der Kabellänge.



1.1 FAA-K-axial 35 x 35 x 35
1.1 FAA-M-axial 35 x 30 x 20



1.2 FAA-K-radial 35 x 35 x 35
1.2 FAA-M-radial 35 x 30 x 25



1.3 FAA-K-tangential 40 x 35 x 35
1.3 FAA-M-tangential 35 x 30 x 25



2.1 KAA 2-pol. M4 50 x 40 x 50
2.1 KAA 2-pol. M5 75 x 40 x 55



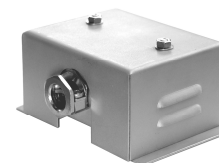
2.2 KAA 2-pol. M4 50 x 40 x 65
2.2 KAA 2-pol. M5 65 x 40 x 75
Winkel auch um 90° versetzt



2.3 KAA 2-pol. M4 55 x 65 x 35
2.3 KAA 2-pol. M5 70 x 80 x 40
auch kon. Ausf. (22 breit)



2.4 KAA 3-polig M4
65 x 45 x 85



2.5 KAA 2x2-polig M4
65 x 40 x 85



2.7 KAA 3-polig M5
85 x 50 x 95
Winkel auch um 90° versetzt



2.8 KAA für 2 CN-Aufreihklemmen
100 x 45 x 65*
*je Kl.-Erw. +21 mm



2.9 KAA für 2 CN-Aufreihklemmen
105 x 60 x 65*
*je Kl.-Erw. +21 mm



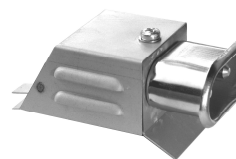
3.1 GAA UFT-ITAK-20
45 x 65 x 25



3.2 GAA UFT-ITAK-25
50 x 65 x 30



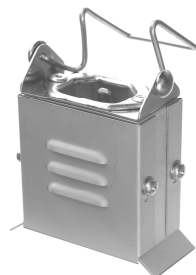
3.3 GAA UFT-ITAK-22-RP
55 x 85 x 25 -RHK



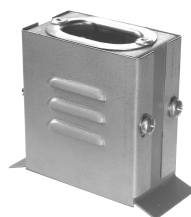
3.4 GAA UFT-ITAK-W-90
80 x 35 x 50



3.7 GAA CEE-ITAK-34
50 x 70 x 40
auch kon. Ausf. (20 breit)



3.8 GAA CEE-ITUK-32
60 x 70 x 40
auch kon. Ausf. (25 breit)



3.9 GAA UFT-ITUK-32
65 x 65 x 40



3.10 GAA UFT-ITAK-25-HP
50 x 65 x 30 -FRHK



3.11 GAA CEE-16A-HP
35 x 65 x 30

Anschlussarmaturen 11.3.1-11.3.5 sowie 11.3.9 u. 11.3.10 sind nur für den Export zugelassen!